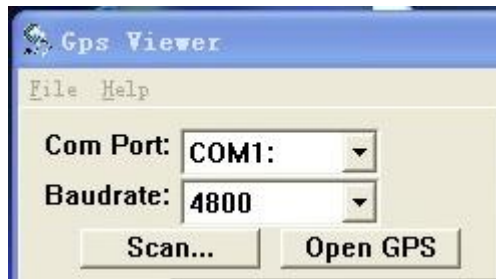


Testing of GPS antenna

Install the GPS Viewer software first

1. No connection with GPS antenna

1) Select COM2,4800, press “OPEN GPS”



If there is any date changes in this box then this means it works well :

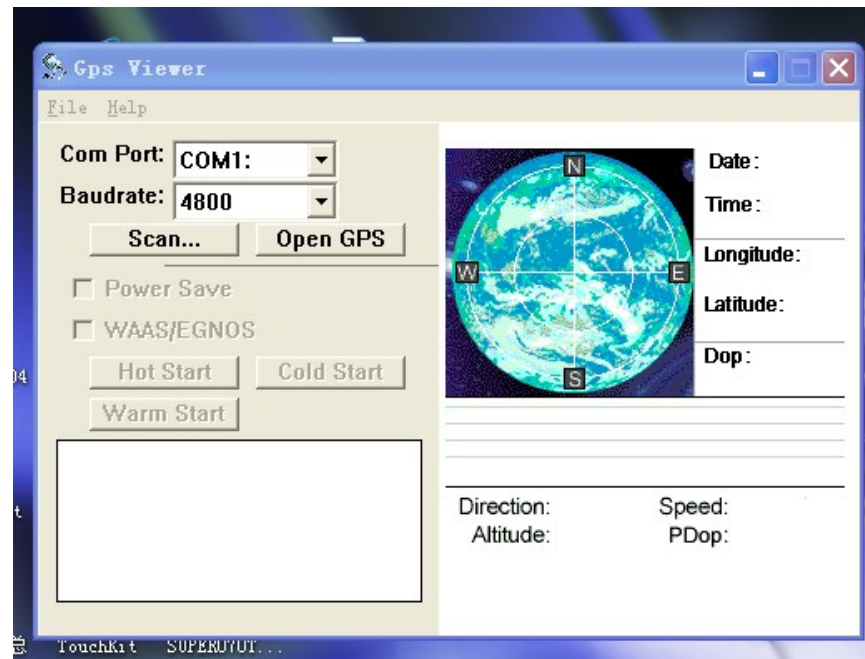


Then

## 2. Connection of GPS antenna

If there is any date, please connect with GPS antenna

See the below GPS Viewer



- 1) Select COM2,4800, press “OPEN GPS”
  - 2) And refresh this box without stopping( minimize this box continuous)
  - 3) About two minutes, there will be three blue squares below the globosity,
- If no blue squares come out, that means the GPS antenna does not match with this unit .  
The antenna is SMA connector.

## Operation of GPS in Road Runner

1. Purchase GPS navigation software
2. Install the software
3. Please remember the path name of the installation
4. Click “LAUNCH “ , select “ GPS PATH “ ,find the install routing ,and select “exe.” Program
5. Exit and close the “ Road runner “
6. Then re-open “ Road runner “ ,click on GPS, and your GPS software should start.